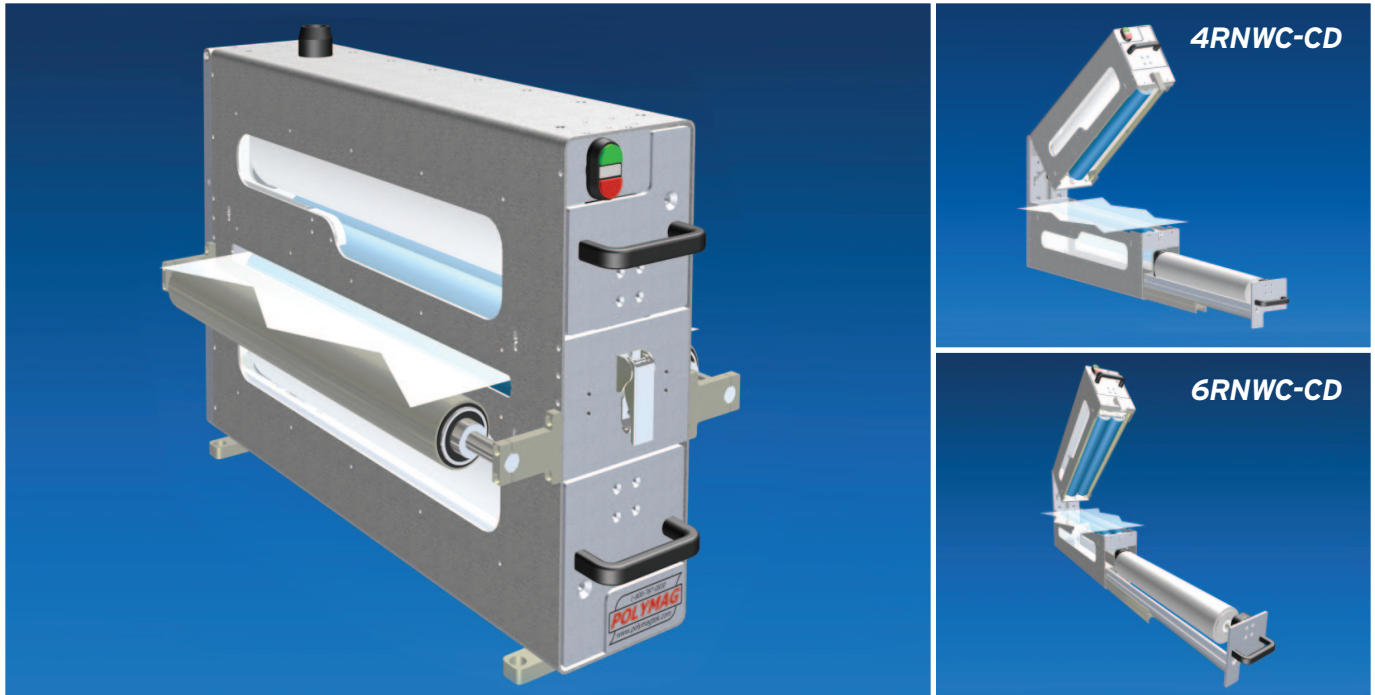


# Two-Sided, Single-Nip or Double-Nip Web Cleaner

ContactClean™ Web by PolymagTek, Inc.



Two-sided, contact web cleaning for "Continual Run," "Stop & Go" or "Limited Access" applications including slitters, coaters, die-cutters, laminators, presses, embossers and more. Sturdy, 12 gauge stainless steel and anodized aluminum constructed "clamshell" design for easy CCR maintenance and web thread-up. Drawer slides promote "on-the-fly" tape change capability. LED window lighting provides easy CCR and tape roll visibility and flashing operator alarms for tape change.

## Applications

- 2-sided cleaning, single-nip or double-nip
- Single-nip - up to 96.9% efficiency\*
- Double-nip - up to 99.9% efficiency\*

## Features

- 2-sided pneumatic single-nip or double-nip clamshell design
- 2.25" (57 mm) o.d. Contact Cleaning Rolls (CCRs)
- Pneumatic cylinders to separate tape rolls when machine stops
- Spring gudgeon tape/drawer slide
- Side tape change access
- "On-The-Fly" tape change capability

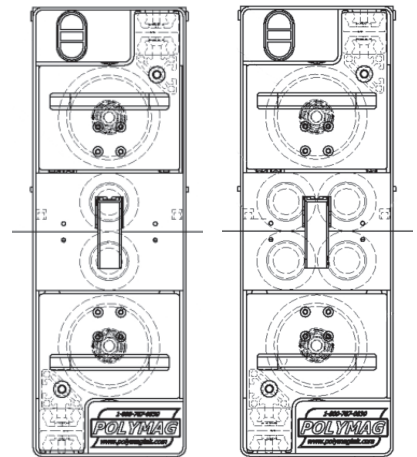
- Static elimination both in-feed and exit sides
- LED window lighting
- Flashing tape change alarm
- Coated aluminum construction
- Backplate or baseplate mount
- Altered designs available

## Process Parameters

- Maximum speed 800 fpm (245 mpm)
- Web widths up to 39" (1000 mm)
- Horizontal web direction

## Options

- In-feed and/or exit idle rolls



\* Based upon results found in the Polymag Tek "Dirt Report"

